



# Parish Magazine

May 2025



Grovely Woods Bluebells  
Photo by Rob Pendlenton

STaB is published by the Parochial Church Council and delivered free of charge to every home in Stratford Tony and Bishopstone. We hope you find it interesting and informative. **Donations towards publication costs are always welcome.**

Donations should be made payable to Bishopstone Parochial Church Council and sent to: The Treasurer, Bishopstone PCC, Ebble Cottage, Mill Lane, Bishopstone, SP5 4BG. Please state on a cover note that it is for STaB.

The views in this magazine are not necessarily those of the PCC.

**Editor:** Kate Pendlenton: 780655

Email: **teamstab2019@gmail.com**

### **Advertising**

Robert Pendlenton: 780655

E.mail: **stabads@outlook.com**

Any articles for inclusion are to be submitted by 5pm on the 20th of the month to appear in the next issue - *unless the magazine is already full.*

The editors reserve the right to edit all contributions.

## **VILLAGE HALL SPRING FAYRE - SATURDAY 17th MAY at 10 a.m. PLANT STALL**

Springtime is coming, although it may not feel like it at the moment! Our Spring Fayre takes place on Saturday 17th May and will include a plant stall. This stall provides a wide variety of plants.

Please could you let us have any spare plants or seedlings of vegetables, herbs or any flowers. This provides a dual purpose of great value plants and generates an interest in gardening.

This year, could you give any donations of plants to me or bring them to the Village Hall on Friday 16th between 2 and 4 in the afternoon,

Thank you, Norman Barter.



### ***A warm welcome to Bishopstone and Stratford Tony...***

*Please let us know if you know of anyone who moves into Bishopstone or Stratford Tony - or indeed if you yourself have recently moved in, please do introduce yourselves! - so that we can offer them/you a welcome in STaB.*





## Hello from the Revd Canon Jenny Taylor



My piece this month is FULL of Thank Yous!!

The first goes to everyone who contributed to our Benefice Lent project “Saving the School in Cueibet, South Sudan”. Thanks to your generosity in Bishopstone, up and down the Valley and in our Deanery we have raised enough – over £10,000, to enable them to complete the building before the rainy season sets in. What a magnificent effort for all of us – thank you!

The second thank you goes to our PCC and the Friends of Bishopstone Church – they are working their socks off applying for grants, raising funds and organising events to save our Church Roof – it is a mammoth task BUT WE WILL DO IT – WITH YOUR HELP!! So thank you to you all in advance for your support.

My final thank you is one I can't really believe I am writing! This will be my last piece as your Vicar! Thank you for all your support over the last years, for all the laughter and tears and all the good times! My Parish ministry will end on May 11<sup>th</sup> and my school ministry at Coombe Bissett on 24<sup>th</sup> July. Later in the year I may be asked to do the occasional service so this definitely is not goodbye!! I am also attempting to learn to ring bells at Coombe Bissett so you will may hear me!!

It has been an absolute joy and an immense privilege being the Vicar of Bishopstone with Stratford Tony – my final service will be on May 11<sup>th</sup> at 10.30 – it would be lovely to see you there! Please continue to support our Church warden and PCC as you go forward under the care of our Rector, Revd Dr Ruth Howlett-Shipley. And always remember the following words which hold true for every single one of us:

“I am convinced that neither death, nor life, nor angels, nor rulers, nor things present, nor things to come, nor powers, nor height, nor depth, nor anything else in all creation, will be able to separate us from the love of God in Christ Jesus our Lord.” *Romans 8.38,39*

<b>Chalke Valley Team Ministry - Parish of Bishopstone and Stratford Tony</b>	
<b>Team Rector:</b>	Ruth Howlett Shipley 01722 697022
<b>Team Vicar responsible for Bishopstone and Stratford Tony:</b>	The Revd Canon Jenny Taylor 01722 503081
<b>Church Warden:</b>	Sarah Seal 01722 780305
<b>Team Administrator:</b>	Emily Broomhead 07890 262376 thechalkevalleychurches@gmail.com

## Friends of Bishopstone Church



As a result of the article in last month's STaB about the structural problems of the North Transept roof, we have had a very positive response. We'd like to thank all the people in Bishopstone, and The Village Hall committee, who have so generously responded to our appeal. Without community involvement and interest it wouldn't be possible. A very big thank you to all.

The application for grant funding is ongoing, which is imperative for the large sum of money required for the repair. Once there is further news we will report the results in STaB.

The next two fund raising events are:

**Organ Recital** by David Halls in Bishopstone Church on **Saturday 10 May at 6.30pm**

**Open Gardens** Bishopstone on **Sunday 6 July 2-5pm**

See posters with more details in STaB

\* \* \* \* \*

Anne Stutchbury

Chairman Friends of Bishopstone Church

Committee:

Margaret Barter, Norman Barter, Richard Brett, George Brutton, Tony Clarke, Jilly Ford, Sarah Seal, Alan Stutchbury



# DAVID HALLS

DIRECTOR OF MUSIC  
SALISBURY CATHEDRAL

## ORGAN RECITAL

at  
St JOHN THE BAPTIST CHURCH, BISHOPSTONE

SATURDAY 10<sup>TH</sup> MAY 2025 6.30pm

to celebrate the renovation of the Conacher Organ



The recital will last approximately 1 hour

Celebratory glass of wine

Free entry with a Retiring Collection

In aid of The Friends of Bishopstone Church

Please let us know if you are coming:

Sarah Seal [TheSeal1@outlook.com](mailto:TheSeal1@outlook.com) 01722 780305

Anne Stutchbury [annewheelwright@gmail.com](mailto:annewheelwright@gmail.com) 01722 780339



ST MARY & ST LAWRENCE  
STRATFORD TONY  
SP5 4AT



ANNUAL SERVICE

PLEASE JOIN US FOR  
CHORAL EVENSONG  
at 3.0'CLOCK ON SUNDAY 29<sup>th</sup> JUNE 2025  
with THE REVD DR. RUTH HOWLETT SHIPLEY

REFRESHMENTS AFTERWARDS  
AT STRATFORD TONY HOUSE

COLLECTION IN AID OF THE CHURCHES CONSERVATION TRUST & BISHOPSTONE CHURCH



# Open Gardens Bishopstone

Teas in the Village Hall

**Sunday  
6th July**



**2-5pm**

Admission Price: £8  
Payable at the Village Hall, SP5 4AA  
For more info: [annewheelwright@gmail.com](mailto:annewheelwright@gmail.com)

*All proceeds to  
The Friends of Bishopstone Church Roof Appeal*





## Bishopstone Parish Council

The planning application for the erection of 15 houses on land at “Whitlocks”, between Whitlock Rise and Meadow View, was submitted on 26<sup>th</sup> March. The public consultation deadline is 15<sup>th</sup> May. Details are available on the Wiltshire Council website: <https://development.wiltshire.gov.uk/pr/sl/planning-application/a0iQ300000DVnjJ>.

It is proposed to hold a public discussion of this application as part of the **Annual Parish Meeting on Friday 9<sup>th</sup> May at 7.30pm** in the Village Hall (see separate notice in this STaB).

The Parish Council will then decide what representations to make at its next regular meeting which will take place on **Thursday 15<sup>th</sup> May 2025 at 7.30pm in the Village Hall**. This will be the first meeting after the elections on 1<sup>st</sup> May and will also be the Annual Meeting of the Parish Council at which the Chair and Vice-Chair for 2025/26 are elected. In the meantime, the Parish Council has been busy working with a group of parents to set up the **Youth Bubble Football** tournament – details below and in the flyer in this STaB.



### BUBBLE FOOTBALL

The Bubble Football event will take place on the Recreation Field on **Saturday 14<sup>th</sup> June at 3.00pm**. As previously mentioned, this is part of a South West Board initiative involving Fovant and Broad Chalke councils as well as Bishopstone. Broad Chalke will be hosting a climbing wall on 1<sup>st</sup> June and Fovant will be holding a Nerf gun session on 7<sup>th</sup> June. All three activities are open to 12 – 18 year olds from all three villages.

There are a limited number of places available to play Bubble Football on 14<sup>th</sup> June so **booking in advance is essential**. To book use the QR code on the flyer in this STaB or use the link: <https://www.eventbrite.co.uk/e/youth-bubble-football-tickets-1326261426629?aff=oddtcreator>. If places are available on the day it may be possible to play without pre-booking. However, you will need to be accompanied by a parent or guardian who can give consent.

There will be other activities taking place on the field and refreshments will be available. So please come along, whether as participant or spectator (Bubble Football games are a laugh!), and join in the fun. One of the objectives of the day is to find out from the younger members of our community what activities they would like to see taking place in the village in the future. A survey will be carried out amongst those attending – so make your views known.





# YOUTH BUBBLE FOOTBALL

**SATURDAY 14 JUNE 2025**

**3.00pm**

**Bishopstone Recreation Ground**

**Try out free zorb activities with  
your friends**

**Ages 12 - 18 years**

**Free refreshments available**

**Scan the QR code to book a place**



See May's edition of STaB and the village website:  
[www.bishopstone-salisbury.co.uk](http://www.bishopstone-salisbury.co.uk)

In partnership with  
Bishopstone Parish Council  
Broad Chalke Parish Council  
Fovant Parish Council

**Wiltshire Council**

## ANNUAL PARISH MEETING

The Annual Parish Meeting will take place in the Village Hall at **7.30pm on Friday 9<sup>th</sup> May 2025**. The APM is separate from meetings of the Parish Council and is an opportunity for anyone to raise any matter for discussion related to life in the village.

In addition, this year, it is intended to use this meeting for an open discussion on the proposed development of 15 houses on the Whitlocks site on the High Road. If you have views on this proposed development which you would like the Parish Council to consider when it is deciding what representations to make to Wiltshire Council please come along and have your say.

**Everyone is welcome to attend**

## Village Hall



## May 2025

### ANNUAL GENERAL MEETING

The Village Hall Annual General Meeting will be held on **Monday 12<sup>th</sup> May** at **7.00** for **7.30pm**. All welcome. Drinks and nibbles will be served.

### ANNUAL SPRING FAYRE

The ever-popular Spring Fayre will be held on **Saturday 17<sup>th</sup> May** between **10.00am** and **12.00 noon** with all the usual attractions. The plant stall will be a key feature and donations of spare plants, seedlings of vegetables or flowers will be very much appreciated. Donations of books are also welcome.

**The hall will be open between 2.00pm and 4.00pm on Friday 16<sup>th</sup> to receive them.**

### The BISHOPSTONE COMMUNITY CAFÉ

The Village Hall Café is normally open on alternate **Thursdays** throughout the year.

Dates for the coming period are the **8<sup>th</sup>** and **22<sup>nd</sup>** of **May** and the **5<sup>th</sup>** and **19<sup>th</sup>** of **June**. **10.30am** until **12.00noon**.

Everyone is welcome to look in for a coffee and chat. There is presently no charge for refreshments.

### MOVIOLA at Bishopstone

**Friday 30<sup>th</sup> May 2025**

The film for **May** will be **“A Complete Unknown”**, *an American biographical musical drama about American singer-songwriter Bob Dylan. Based on the 2015 book Dylan Goes Electric! by Elijah Wald, the film portrays Dylan through his earliest folk music success until the momentous controversy over his use of electric instruments. Starring Timothee Chalamet and Elle Fanning.*

Doors open at **7.00pm** and the film will begin at **7.30pm**.

Entry for the film is **£7.00**. A cash bar with ices and snacks will be available.

If possible, please book in advance with Caroline Ash on (01722) 781044, Nigel Peasley on 07761 463737 or Sue Taylor on 01722 780316.

A trailer for the film can be seen in the Events section of the village website at [www.bishopstone-salisbury.co.uk](http://www.bishopstone-salisbury.co.uk). The film on **June 27<sup>th</sup>** will be **“Maria”** and on **July 25<sup>th</sup>**, **‘Bridget Jones: Mad About the Boy’**

## **BISHOPSTONE COMMUNITY LUNCHES**

A home-cooked lunch is served monthly from October until April.  
Monthly community lunches will resume in October.

## **BOOKINGS FOR SOCIAL EVENTS AND WORKSHOPS**

Both halls are available for hire. To enquire or make a booking, please contact the bookings secretary Margaret Barter (01722) 780471

## **BISHOPSTONE PLAYGROUP**

The playgroup meets on Friday mornings during term time from 9.30 – 11.00 am. Breastfeeding support is available from qualified breastfeeding counsellor Cally Edwards and trained peer supporters. Find further information on our Facebook page *Bishopstone Playgroup* or contact Cally [callyedwards@me.com](mailto:callyedwards@me.com) or 07968 797 168.

## **“EXTEND” EXERCISE CLASSES**

For further information about these exercise classes contact Jenny on 01722 780863, email: [jennyberwynjones@yahoo.co.uk](mailto:jennyberwynjones@yahoo.co.uk)

## **PILATES AT BISHOPSTONE**

For further information contact Claudine on 07788 587937 or email: [claudineblake@aol.com](mailto:claudineblake@aol.com)

## **YOGA WITH HANNAH**

For more details please contact Hannah Stocker at 0773 856 1888 or by email: [yoga\\_with\\_hannah@outlook.com](mailto:yoga_with_hannah@outlook.com).

## **VILLAGE CRAFT GROUP**

The Village Craft Group meets on the first Tuesday of the month from 7 – 9pm. Any crafters are welcome. For further details please contact Sue Porter on 01722 780459 or Jacqueline James on 01722 335866.

## **ART GROUP**

An Art Group led by Russell Bignold meets every Thursday morning between 9.45am and 11.45am. Drawing, painting and sculpture (clay) are taught, covering all genres. Cost £20 per session, tea and biscuits provided.  
Contact Russell at [russellbignold@btinternet](mailto:russellbignold@btinternet). Website [www.russellbignoldartist.com](http://www.russellbignoldartist.com).



## **Bishopstone Village Hall rates for private hire**

Bishopstone Village Hall has 2 rooms that are available for hire for a wide range of functions. The larger room is ideal for children's parties with lots of space for running around. It can also accommodate wedding receptions, charity functions and large family celebrations.

The smaller room (The Memorial Room) is a good size for meetings and smaller gatherings.

The modern kitchen is spacious and fully equipped with an electric catering range, a professional 4 minute dishwasher, water boiler, hot cupboard, microwave oven, 2 fridges and a freezer, all suitable for professional caterers. There is also glassware, crockery and cutlery for over 80 people.

The hire charges include use of heating and electricity.

### **The rates are currently:**

	<b>Villagers</b>	<b>Non Villagers</b>
Hire of both rooms (With full use of the kitchen)	<b>£15 per hour</b>	<b>£20 per hour</b>
Hire of both rooms (With tea making facilities but no other electrical kitchen equipment)	<b>£10 per hour</b>	<b>£15 per hour</b>
Full use of the kitchen <u>only</u>	<b>£10 per hour</b>	<b>£15 per hour</b>
Weddings – per event/day	<b>£150</b>	<b>£250</b>
Parties – per event/day	<b>£100</b>	<b>£150</b>

### **Broadband**

An additional charge is made for use of the broadband connection of £6 per hour with a maximum of £25 per day.

### **Large projection screen**

Use of this professional quality screen is charged at an additional £10 per event.

The hire period must include time to set up and clear away after the event.

**For further information and bookings contact: Margaret Barter 01722 780471**



## **Upcoming Events**

**New Lunch Set Menu  
2 x Courses £18  
Available Tue, Wed & Thur Lunch**

**Mothering Sunday 30<sup>th</sup> March  
Food served 12-6**

**Easter Sunday 20<sup>th</sup> April**

**Bank Holiday Monday 21<sup>st</sup> April  
Open all day**

**Caribbean Night  
Saturday 26<sup>th</sup> April**

**Book Now  
01722 780244**

## Chalke Valley Community Support

### POLICE

**Call 999 in an emergency:** an emergency is when someone is being threatened or at risk of getting injured, or a crime is in progress.

**Call 101 for non-emergencies:** such as reporting a crime that has already taken place, non-urgent incident, contacting local officers etc

To contact your Community Policing Team about a community-related matter, such as a school visit, then please email [SalisburyAreaCPT@wiltshire.police.uk](mailto:SalisburyAreaCPT@wiltshire.police.uk)

Please note that this mailbox is not monitored 24/7.

You are unable to report crimes of any type via email and please do not report any situations that require an urgent response.

#### **You can follow us on:**

Facebook - [www.facebook.com/salisburypolice](http://www.facebook.com/salisburypolice)

Twitter - [www.twitter.com/SouthWiltsCPT](http://www.twitter.com/SouthWiltsCPT)

Community Messaging: Sign up to Community Messaging for news and updates from your local policing team: [www.wiltsmessaging.co.uk](http://www.wiltsmessaging.co.uk)

### **Sixpenny Handley and Chalke Valley Practice**

Doves Meadow Surgery, Broad Chalke: 01722 780282

**Broadchalke Surgery is open on Tuesdays and Thursdays**

Sixpenny Handley Surgery: 01725 552500

[www.sixpennydocs.co.uk](http://www.sixpennydocs.co.uk)



### **MOBILE LIBRARY**

The Mobile Library will be calling at The Styles in Bishopstone between 1115-1135 on the following Thursdays:

8 May, 5 June, 3 July, 31 July, 28 Aug, 25 Sept, 23 Oct



#### **Coombe Bissett Stores**

[www.coombebissettstores.co.uk](http://www.coombebissettstores.co.uk)

[shop@coombebissettstores.co.uk](mailto:shop@coombebissettstores.co.uk) Tel: 01722 718852

#### **OPENING HOURS, SHOP AND POST OFFICE**

Mon-Fri: 7am-6pm, Sat: 7am-1pm

#### **Chalke Valley Stores Broadchalke**

w: [www.chalkevalleystores.co.uk](http://www.chalkevalleystores.co.uk)

e: [info@chalkevalleystores.co.uk](mailto:info@chalkevalleystores.co.uk) Tel: 01722 780998

#### **OPENING HOURS**

Shop: Weekdays 9am - 5pm (until 4pm on Saturdays)

Post Office: Monday, Tuesday & Thursday 9:30am- 1:30pm



## CHALKE VALLEY LINK SCHEME

**This scheme exists to provide transport and other good neighbour support in a local, personal and friendly way to members of the Chalke Valley community who need it.**

If you live between Bishopstone and Bodenham or Britford and need help getting to your surgery/hospital appointments/local shopping or to visit family members in hospital, **please phone 01722 718780 to reach our Joint Transport Coordinators (Anna Mynott, Debby Underhill or Roger Brown) who will be on duty in rotation.**

There is no charge, but you are invited to make a donation towards our administrative costs. Our co-ordinators are all volunteers and there may be occasions when you will be asked to leave a message which will be answered as soon as possible. Our drivers are all volunteers too, so please give us as much notice as possible so that we may find a volunteer who is available.

We are always looking for Volunteer Drivers to enable us to continue to provide a useful service for our community. If you feel you can help - you won't be committed to any particular date or time, only when you are free - please contact any of the above for further information.

Registered Charity No 1076335

Queen's Award for Voluntary Service

### Staying in Touch

STaB magazine is a vital source of communication in the village, keeping everyone informed as to what is happening locally. However, the Covid-19 pandemic has highlighted the fact that situations can change very rapidly. To keep up to date with what is going on there are two other important sources of information in Bishopstone - the village website and our own WhatsApp network.

The village website – [www.bishopstone-salisbury.co.uk](http://www.bishopstone-salisbury.co.uk) is updated in real time and carries all the latest news on issues that affect the village.



The Bishopstone Network is a WhatsApp messaging service that has more than proved its worth during the pandemic, and more recently during the storms when residents were able to report fallen trees and blocked roads to the Emergency Planning Officer. Information can be instantly shared to your mobile phone about support services being provided in the village and on a variety of other matters – everything from the length of electricity black-outs to what is available from the White Hart take-away service! You will need to download the App to your phone and then contact Piers Edwards ([piersgedwards@gmail.com](mailto:piersgedwards@gmail.com) or 07920 475009) or Kate Pendlenton ([kmpendlenton@hotmail.com](mailto:kmpendlenton@hotmail.com) or 07769202200) and ask to be added to the group.



**CHALKE VALLEY**  
**SPORTS CENTRE**  
*sport for all*

**Facilities for all the Chalke Valley**  
**SPORTS SCENE**  
**MAY 2025**

**Annual General Meeting.** This will take place on 3 June 2025 7.00pm at the Sports Centre

**Climbing Wall Event.** This takes place on Sunday 1 June 12.00-4.00. It's a free event for young people aged 12-18 organised by Broad Chalke Parish Council in conjunction with Bishopstone and Fovant parish councils. Booking is via Eventbrite and opens on 1 May on a first come first served basis. It is limited to young people from the three villages. (See flyer on following page).

**Tennis Coaching.** Adult and Junior coaching is now taking place on Tuesdays. Further details from the Tennis Club.

**Petanque.** The Friday evening sessions have started again. 6.00-8.00pm. All welcome. £2 per session.

**Chalke Valley Challenge.** We will have hosted this event on 27 April in conjunction with The Friends of Broad Chalke School.

**Chase and Chalke Walking Festival.** At the time of writing this is being planned for Sunday 8 June with walks and activities starting from the Sports Centre.

**Chalke Valley Fete and Produce Show –** This takes place at the Sports Centre on Saturday 16 August 2025 from 1.00pm-4.00pm. Volunteers required!

**The hall is available for private hire** so if you have a family celebration in the coming weeks, why not see what we can offer?

General e.mail: [info@chalkevalleysportscentre.co.uk](mailto:info@chalkevalleysportscentre.co.uk)

More details can be found on our website: [www.chalkevalleysportscentre.co.uk](http://www.chalkevalleysportscentre.co.uk)

# YOUTH POP UP

**SUNDAY 1 JUNE 2025**  
**12.00-4.00pm**  
**Chalke Valley Sports Centre**

Try out free climbing wall fun with your friends

Ages 12 - 18 years

Free refreshments available

Scan the QR code to book a place

**SCAN ME**

**MORE INFO**

Young people from the village of Broad Chalke will have priority of place at the event, as a key aim (apart from having fun!) is to hear what you would like the Parish Council and village partners to organise by way of youth support and activities in the future.

In partnership with Broad Chalke Parish Council, Bishopstone Parish Council and Fovant Parish Council

**Wiltshire Council**

## Chalke Valley Fete 2025

We have been busy booking lots of fun for this year's event on 16th August. Free entry, lots of games for all ages, gun dog display as well as a fun dog show for all our four legged friends. There is live music, food, drink, craft stalls, bottle stall, classic cars and so much more.

Now is the time to start planting those seeds ready for the produce show. We have some more classes this year so please have a look on our website:

[www.chalkevalleyfete.co.uk](http://www.chalkevalleyfete.co.uk)

We are looking for a few more helpers. If you could give up 1.5-2 hours of your time on the day it will allow us to let each set of helpers have some time looking around and enjoying the fete. No experience needed and we give you free refreshments. The fete is run entirely by volunteers and all the money goes to local charities so this could be your bit for the year!

Please contact [chalkevalleyfete@gmail.com](mailto:chalkevalleyfete@gmail.com) or phone Sara on 07711562384



## Salisbury Foodbank

This last month I took a total of 5.8kgs of food containing some Easter goodies and a very generous £70 cash donation to the warehouse, thank you everyone.

They are particularly short of:-

Long Life Fruit Juice

Tinned veg

Meat/ veggie Meals (Tinned Curry, Chilli, Ham)

Tinned Fruit

Packet and Sponge Puds

Shampoo/Conditioner/2 in 1

They still have plenty of Pasta but need more food ....  
also please make sure any donations are within date.

The Foodbank provides 3 days worth of emergency food and toiletries to people in need in Salisbury and the surrounding area.

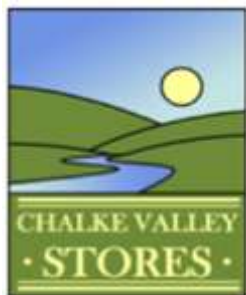
Over 90% of the food distributed by foodbanks is donated by the public - that's why your food donations are absolutely vital to their ability to give everyone referred to them a balanced and nutritious three day supply of food.

Thank you in advance for your support.

Judy Barrett

Please leave donations either in the box in the Church, by my front door, at the Old Post Office, The Cross, Crouchston, or phone me on 01722780306 if you would like me to collect.





***Shop at the heart of the Community  
Owned by YOU, Run by YOU, Here for YOU.***

w: [www.chalkevalleystores.co.uk](http://www.chalkevalleystores.co.uk) | e: [info@chalkevalleystores.co.uk](mailto:info@chalkevalleystores.co.uk) | Tel: 01722 780998

### **OPENING HOURS**

**Shop:** Weekdays 9.00am - 5pm (until 1pm on Saturdays)

**Coffee Shop:** Weekdays 10am - 3.30pm (until Midday 12pm on Saturdays)

**Post Office:** Monday, Tuesday & Thursday 9.30am to 1pm

**Home deliveries:** If you need a delivery, please call the Shop on **01722 780998**.

We are now selling bunches of seasonal garden flowers which are provided to us by Ashmore Farm in Dorset. We are taking deliveries three times a week, on Mondays, Wednesdays and Fridays.

Update on plans for drainage works at the Hub – Following last month's information, the work starts on April 28<sup>th</sup> and should take two to three weeks. The contractors are Dorset Drainage Limited. We will not need to close the Hub but there will be a temporary reduction in parking spaces which will be needed by the contractors so the parking bays to the east of the Hub will be unavailable to customers and we apologise for this inconvenience. The pathway used to get to the back door of the building will not be accessible until the work is complete.

**Victory in Europe Day celebrations – come along to the 80<sup>th</sup> VE day celebration at the Hub. Embrace the charms of a 1940s classic tea party with a touch of nostalgia. Enjoy big band and classic sounds of the era, share your stories and reflect with a moment of silence to honour the significance of the day. Come if you can and dress in 40s style. The party will take place between 2 and 4 pm on Thursday 8 May. Tickets £15 a head available from the Shop. We look forward to seeing as many of you as possible.**

***NB There is a Trussell Trust Collection Point in the Hub for any donations of foodstuffs you may wish to make. Your generosity will help those most in need.***



Full line-up announced for the Chalke History Festival! Tickets now on sale. Top historians from around the globe, and the best living history experts in their field, will meet in the glorious setting of the Chalke Valley in Wiltshire from 23<sup>rd</sup> to 29<sup>th</sup> June, sharing their vast knowledge and experience with history fans, students and families alike.



in partnership with  
**evelyn**  
PARTNERS

# CHALKE

HISTORY FESTIVAL  
23 - 29 JUNE 2025  
BROAD CHALKE, WILTSHIRE



ANTHONY SCARAMUCCI MICHAEL PALIN  
AL MURRAY TOM HOLLAND MICHAEL GOVE  
KEVIN McCLOUD IAN HISLOP KATE MOSSE

NIAL FERGUSON ALICE LOXTON PETER FRANKOPAN  
JAMES HOLLAND HELEN CASTOR ELEANOR BARRACLOUGH  
NICK CARTER TOM PARKER-BOWLES MAX HASTINGS  
BEN MACINTYRE GILL HORNBY ANTONY BEEVOR ANNIE GRAY  
JAMES REBANKS PETER KOSMINSKY HELEN CARR  
WILLIAM DALRYMPLE ALAN JOHNSON



## THE PUB LANDLORD

Wizzo's Rip-Roaring History • History's Maid  
Time Traveller's Kitchen • Foreign Field  
On Cue Theatre Company • Kith and Kin • The Last Bantam  
The Headless Horseman • Rattlebox Theatre • The History Maker

## THE D-DAY DARLINGS

Supersonic Queen • Jon Boden & the Remnant Kings  
The Branflakes • Black Sheep • Miranda Rutter • Good Habits



Prehistory to Present • Pario Gallico • Heritage Blades  
Apothecaries' Garden • Historic Equitation  
Remaking History • The Historical Sailmaker  
Wimborne Militia • Victorian Wild West Experience  
Royal Navy Beachhead Commandos • The Trench  
SOE Training Camp • Historic Market Square



[chalkefestival.com](http://chalkefestival.com) | Tickets on Sale Now



## STOP PRESS! Bishopstone in Print

For the month where we mark the 80<sup>th</sup> anniversary of VE day here is an extract from the newspaper archives on one Bishopstone contribution to the war effort.

### PORTSMOUTH BOYS IN TROUBLE Complaints "Fast & Furious" SALISBURY RURAL COUNCIL CLERK TAKES ACTION

PORTSMOUTH CHILDREN'S COTTAGE HOMES have been established in miniature, at Bishopstone, near Salisbury, the Clerk (Mr. A. M. Wilson) informed Salisbury and Wilton Rural District Council.

The Clerk stated that there was still quite a considerable number of evacuated children in the district. As Clerk and Evacuation Officer he had to deal with a good deal of correspondence over difficulties between householders and children.

A little while ago there was trouble over a certain number of boys—in fact, their exploits actually got into the Press—and he realized something would have to be done.

#### MANY COMPLAINTS

The boys, for the most part, were at Steeple Langford, Stapleford, Wishford and South Newton, and they—and some girls—were from the Portsmouth Cottage Homes, and were certainly unruly and not quite the type of children to have been sent to be billeted in individual houses.

Complaints became "fast and furious," and exercising powers he had from the Ministry he requisitioned a house at Bishopstone in which were now situated 26 of the most unruly boys who were being looked after by the Matron of the Portsmouth Cottage Homes and a small staff.

#### LOWER COST

Arrangements were working very well indeed, and it was probable that the actual cost of running the house—which would be reimbursed to the Council—would cost the Government less than the allowances formerly paid to individual householders.

The boys were now under proper supervision and a representative of the Medical Department of the Ministry who had visited Salisbury that day had commended the arrangement.

The Council complimented the Clerk upon the action he had taken.

In 1940 Bishopstone became home to "unruly" boys from Portsmouth's Cottage Homes, a children's home in Portsmouth. During the second world war the children were evacuated and initially billeted with families throughout Hampshire and Wiltshire. However, as reported here, this led to trouble with boys living in Steeple Langford, Stapleford, Wishford and South Newton. Complaints came "fast and furious". The Clerk to the Salisbury Rural District Council said he had "to deal with a good deal of correspondence over difficulties between householders and children".

The report said that the children were "certainly unruly" and "not quite the type of children to have been sent to be billeted in individual houses". The solution was the requisition of a house in Bishopstone "in which were now situated 26 of the most unruly boys who were being looked after by a Matron and a small staff". The boys were now under proper supervision and the arrangements were working well. The Council complimented the Clerk on the action he had taken. It is believed that the house involved was Netton House on Broadchalke Road.

Meanwhile....From "The Field" in 1982.

#### Fox watching

From Mr F G Sidford

SIR, Referring to Iktis's article 'Foxes and a watching brief' [30 June]. I know a similar story, perhaps even better, that happened in Bishopstone near Salisbury about sixty years ago.

A farmer who was losing poultry decided to sit with his friend and wait.

They sat in the local till closing time and then went to their hideout. It was a bright moonlight night and presently the friend pointed and said "look there he is".

The letter does not say which "local" they were in – The White Hart or, then, The Three Horseshoes.

The result was — aim, fire, click click.

They had forgotten to load the gun.

F G SIDFORD,  
Tisbury, Wiltshire.



## Rambling with Jazzie

What lovely sun we have enjoyed recently, but today (19<sup>th</sup> April) is overcast after heavy rain. The garden has loved it, but it means fires again tonight! Jazzie is NOT impressed, as she is not keen on walkies in the wet!

However, the garden is coming along very well. We fill our bins every fortnight with pruning sans weeds, and at the last collection my small bag was also removed for council compost! Sarah and Suzanne have done wonders in the flower beds, and we have done more with the support of a very keen robin! He/she has been nearby whenever in the garden, and comes as close as a foot when weeding. We have also enjoyed the other birds coming back and nesting, especially the wrens. We have two families, I think, on each side of the garden.



The hedgehogs are back too and quite active, leaving their deposits on the lawn. Jazzie has found them at night too, as they eat the food, possibly with cat support! There is little left in the morning.

Actual rambles with Jazzie have been few during the past weeks, as I have been laid low, disinclined to walk. She is also very temperamental about where to go, and has a mind of her own. When she has had enough it becomes a real tussle to get her not to go home! She is in need of her grooming once again, which comes up on 30<sup>th</sup> April. It will cost a lot, as she is so tangled despite a shower last weekend!

The church is now ready for Easter Day, full of fresh and colourful flowers and lovely arrangements, with Sarah's beautiful tomb at the altar. We hope to see lots at the service tomorrow. The churchyard is looking really wonderful, full with bluebells, cowslips and primrose everywhere. The gravestones look like sentinels waiting for summer, surrounded by blue and yellow to remind us of the war in Ukraine.

Spring is truly with us now, and as Jazzie and I enjoy the garden, the weeds, the new plants and the seeds coming up, we wish you all a happy Eastertide and good walkies and gardening!



*James Thompson (19.04 25)*



**Fabulous**  
**Family Fun Day 11**  
**SALISBURY RUGBY CLUB**



**FREE  
ENTRY!**



**Saturday 10th May, 12 noon - 9.30pm**

**BEER FESTIVAL . LIVE MUSIC . PIMMS & PROSECCO  
. STREET FOOD . FOOTBALL AND TOUCH RUGBY .  
GRAND RAFFLE . CHILDREN'S ENTERTAINMENT .  
DJ KEV . RADIO ODSTOCK**



**@FABULOUSFAMILYFUNDAY**

Kindly sponsored by





# MEDITATION

A Meditation Hour is held every 2<sup>nd</sup> Wednesday of the month at  
Lodge Farmhouse, Broad Chalke, at 2.30pm



We have a short, introductory talk followed by 30 mins.  
of silence (with tea and chat afterwards if you would  
like to stay on).

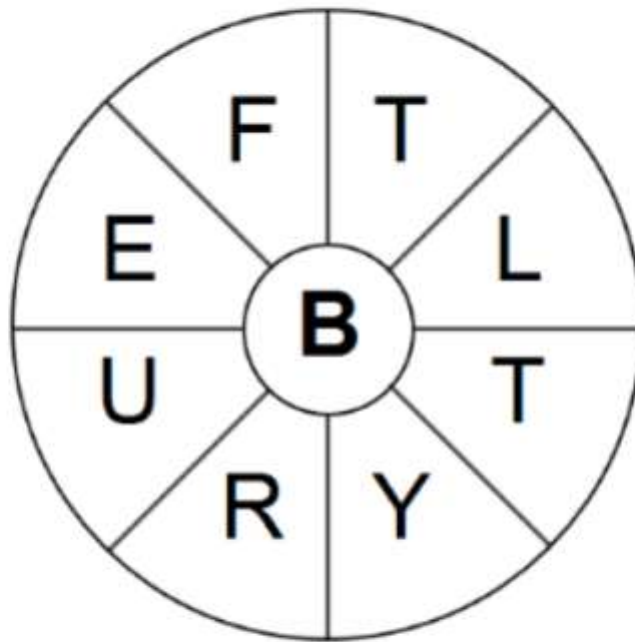
Contact: Janet Roe: 01725 519242 [jhroe99@gmail.com](mailto:jhroe99@gmail.com)

## Dates for 2025

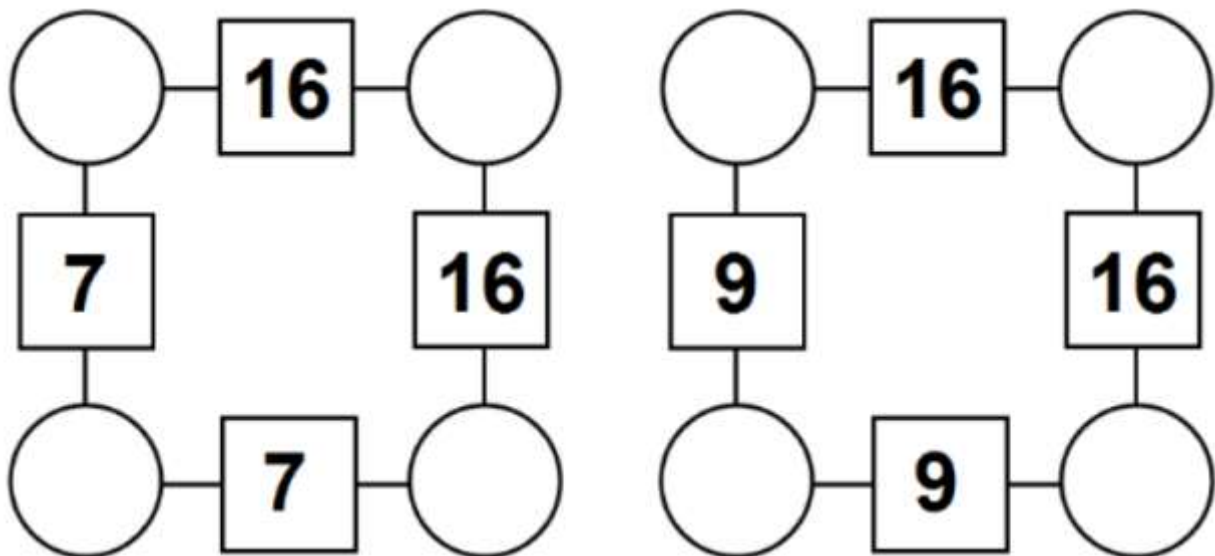
Jan 8 <sup>th</sup>	Feb 12 <sup>th</sup>	March 12 <sup>th</sup>	April 9 <sup>th</sup>
May 14 <sup>th</sup>	June 11 <sup>th</sup>	July 9 <sup>th</sup>	August 13 <sup>th</sup>
Sept 10 <sup>th</sup>	Oct 8 <sup>th</sup>	Nov 12 <sup>th</sup>	Dec 10 <sup>th</sup>

## Puzzles and Activities

### Spring Word Wheel



This Spring themed word wheel is made from a 9 letter Spring themed word. Try and find that word, then make as many words of any length as you can from these letters. You can only use each letter once, and each word must include the letter **B**.



The aim of an arithmagon is to work out which numbers go in the empty circles. The numbers in the square boxes are made by adding together the numbers in the circles either side. For example, if the number in the square box was 10 you could try 6 and 4, but the numbers must also add up on the other edges, making this more difficult than it first appears.



## Police Bulletin

*A monthly newsletter from  
Philip Wilkinson, Police and Crime  
Commissioner for Wiltshire.*



You may have read about the government's new "Neighbourhood Policing Guarantee" which they claim will put an extra 13,000 neighbourhood officers on our streets by the end of 2029.

They have also said there will be guaranteed dedicated neighbourhood police teams and extra police patrols in busy areas at peak times and a dedicated antisocial behaviour (ASB) lead in every force.

What does this mean for Wiltshire and Swindon?

To achieve these targets, we have been given an extra £1.6 Million which in Wiltshire will be 24 police officers and 40 Special Constables on our streets by the end of 2026. While I applaud the initiative this has to be set against the overall financial deficit of £5.2 million due to Wiltshire being the third lowest funded force per head of population in the country.

We are fortunate in Wiltshire Police, that our Chief Constable has already put in place most of these new government neighbourhood police initiatives and to balance the books without reducing officer numbers, so these new officers are appreciated and will improve the service we provide.

You can already go to the "Your Area" part of the Wiltshire Police website to see who the named officers responsible are for your neighbourhood, and we already have an ASB manager in Wiltshire Police. Also, more than 6,000 hours of visible patrols in hotspot areas were conducted across the county last year involving more than 140 officers, Police Community Support Officers (PCSOs), and ASB Street Wardens

While I have been lobbying this and the last government to revise the police funding formula, I'd like to thank the six Conservative and Liberal Democrat MPs in Wiltshire, who have joined together to write to the government to raise this issue again.

While our funding formula leaves us at a disadvantage to most other forces, I am delighted to report that the performance of Wiltshire Police continues to improve; the levels of most crimes are down and arrests are up. But as far as the Chief Constable Catherine Roper and I are concerned, we want more improvements yet.



# Your local property expert

**WOOLLEY  
& WALLIS**

No-one understands the local property market as well as us. We provide our clients with the very best representation and provide a service without compromise. We're here for you, whatever you need.

**Salisbury**  
**01722 424524**

**w-w.co.uk**





→ Family → Employment → Property  
→ Litigation & Disputes → Commercial → Wills & Probate

St Mary's Chambers, 51 New Street, Salisbury, Wiltshire SP1 2PH  
t: 01722 410664 e: [mail@sampsoncoward.co.uk](mailto:mail@sampsoncoward.co.uk)  
[www.sampsoncoward.co.uk](http://www.sampsoncoward.co.uk)





Our expert Wills, Probate and Estate Planning department can advise and support you when it comes to protecting your family for the future.

**Will Writing**  
**Lasting Powers of Attorney**  
**Trusts**  
**Probate**  
**Estate Planning**  
**Inheritance Tax**

Contact the team today to find out how we can support you.

**Because your family matters**

45 Castle Street, Salisbury, SP1 3SS

01722 412000

[www.parkerbullen.com](http://www.parkerbullen.com)

**PARKER**  
**BULLEN**  
SOLICITORS

Parker Bullen LLP is authorised & regulated by the Solicitors Regulation Authority SRA number 535414





**BASED IN FOVANT**

**01722 714308**  
**07541 358570**

- Local
- BPCA trained
- RSPH qualified
- Sensible pricing
- Fully insured
- Reliable
- Discreet
- Evening & weekends



[www.greystonespestcontrol.com](http://www.greystonespestcontrol.com)

[michael@greystonespestcontrol.com](mailto:michael@greystonespestcontrol.com)

# Lawn care to the highest possible standards

Get an INSTANT, no obligation quote by using our online lawn measuring tool in 3 easy steps:

visit [www.lawn-tech.co.uk](http://www.lawn-tech.co.uk)

- 1 Enter your postcode
- 2 Outline your lawn
- 3 Submit your details



## What makes Lawntech stand out from the crowd?

- ✋ A track record of over 30 years experience, delivering consistent professionalism
- ✋ Highly qualified and accomplished technicians with over 130 years of combined experience
- ✋ Offering a sustainable approach to lawn care, using semi organic fertilisers. Fully organic treatment programme available



**Lawntech**<sup>TM</sup>

**FREEPHONE 08000 665 465**

Free to call - landlines and mobiles

[info@lawn-tech.co.uk](mailto:info@lawn-tech.co.uk)

[www.lawn-tech.co.uk](http://www.lawn-tech.co.uk)



## *Why* choose Bluebird Care?

We're here so your loved one can stay home, where they want to be. Where things are familiar. Where they feel at ease. Where they have the best chance to live a full and comfortable life.

Whether you're looking for everyday companionship or more complex care, our highly-trained Care Experts will help your loved ones live the life they want, where they want.

Because as everyone knows, it's good to *be home* and we provide you with premium home care enabling you to stay in the home you love.

**Home Care • Live-in Care • Complex Care**

*Call us for a friendly chat on 01722512989  
or email us: [wiltshiresouth@bluebirdcare.co.uk](mailto:wiltshiresouth@bluebirdcare.co.uk)*



# Professional, reliable and caring

Do you feel that you need some support with personal care or just some help with day-to-day living? Our dedicated team of caregivers provide a professional, reliable service tailored to meet your needs.

- Personal care
- Companionship
- Housework
- Preparing meals
- Shopping
- Support with medication
- Dressing
- Driving to appointments
- Sleep ins
- Welfare checks
- Live in care
- Visits from as little as a 10 minute pop in to full end of life care support and night shifts.

Covering the Chalke Valley, South Wiltshire, North Dorset, East Dorset and South-East Somerset

Get in touch and see what we can do for you and find out how we can make things that little bit easier.



**Now available in the Chalke Valley**

**info@bramleycare.com | bramleycare.co.uk**  
**Shaftesbury 01747 855844 Sherborne 01935 677655**  
 Bramley House, Mere | Millbrook House, Child Okeford | The Old Rectory, Stalbridge  
 Bramley Home Care, Shaftesbury and Sherborne



# **Coombe Bissett Stores and Post Office**

**Homington Road**

**Coombe Bissett SP5 4LR**

**shop@coombebissettstores.co.uk**

**01722 718852**

**facebook.com/CoombeBissettStoresNew**

Open Monday to Friday 7:00am to 6:00pm

Saturday 7:00am to 1:00pm

closed Sunday and Bank Holidays

When the shop is open, so is the Post Office



## **FLAMSTONE LOGS**

### **Air & Kiln Dried Logs for Sale**

Various load sizes available

### **Tree Surgery Services**

NPTC Trained - Fully Insured - Public Liability

For further information or a free quotation

Please Contact

**John 07768 894043 or Henry 07807 892510**

## **S. WALLWORTH ELECTRICAL SERVICES LTD**

**FULLY QUALIFIED ELECTRICIAN, EMERGENCY REPAIRS**

**INSTALLATIONS – RE-WIRES, ELECTRICAL REPAIRS & TESTING**

**EXTRA SOCKETS & LIGHTING, NIGHT STORAGE HEATING, ELECTRIC SHOWERS**



**DOMESTIC & COMMERCIAL**

**FREE QUOTATIONS.**

**SIMON WALLWORTH**

**31 DEAN LANE, SIXPENNY HANDLEY**

**SALISBURY, WILTSHIRE**

**SP5 5PA**

**TEL: 01725 552545 MOB: 07826 928759**

**S.WALLWORTH@HOTMAIL.CO.UK**

## **SELF STORAGE FACILITY**



**Safe, secure & convenient**

**INDOOR UNITS & CONTAINERS**

**for domestic or business use**

**All sizes available**

**On the A354 near Sixpenny Handley**

**Phone David 07971 869372 or Steph 07748 925810**

**email: [info@dorsetandwiltsstorage.co.uk](mailto:info@dorsetandwiltsstorage.co.uk)**

**[www.dorsetandwiltsstorage.co.uk](http://www.dorsetandwiltsstorage.co.uk)**

## Valley Contracting Services



- FENCING
- CONCRETE BREAKING
- SCRUB CLEARANCE
- MINOR EXCAVATIONS
- DITCH/CULVERT CLEARANCE
- MINOR DRAINAGE

Fully Insured - Public Liability  
Free Quotations

Please contact Chris: Mobile: 07707 151234  
Email: [valscape712@yahoo.com](mailto:valscape712@yahoo.com)

# HIGH SPEC WINDOW CLEANING

Other Cleaning Services Include:

- Gutters
- Driveways
- Conservatories
- Greenhouses
- Solar Panels
- Fascias
- Patios
- Walls
- Cladding
- Paths

T: 01425 650894 M: 07879 426914  
[www.hs-cleaning.co.uk](http://www.hs-cleaning.co.uk)



# BURROW



**Septic Tank Owners: register your interest in a fully-funded upgrade to a treatment plant.**

Due to the Phosphate pollution in your local river catchment we are operating a septic tank replacement scheme using private funding.

We install wastewater treatment plants that remove almost all pollutants, with funding secured from planning applicants who need to create a positive impact on the environment.

**Register on our website today.**

**[burrow-environmental.com](http://burrow-environmental.com) 01935 507 508**

**TLC**  **Totally Living Care**

**Are you looking for Live in Care?**

Totally Living Care are now offering Live in Care services. This can be from Companionship to End of Life Care, we can also care for couples too!

We offer professional, skilled and compassionate live in carers to care for you or your loved ones, in their own home.

So, if you are looking for a package of care that you feel Domiciliary Care cannot reach, then Live in Care is for you!

**Why don't you give one of our friendly and helpful team a call on 01722-567356.**

**Prices starting from £950 a week.**





CHALKIES



# Chalke Valley Playschool Broad Chalke

CHALKIES



## JOIN OUR VILLAGE PLAYSCHOOL

'Chalkies' is a small rural nursery and after school club in the heart of the Chalke Valley.

We provide childcare for children aged 9 months to 11 years.



Funding  
for 1 year  
olds and  
upwards

Qualified  
& first aid  
trained  
staff

A variety  
of  
enriching  
activities

Afterschool  
club until  
6pm

**BOOK YOUR SHOW AROUND TO SEE WHAT WE  
CAN OFFER!**

For More Information Email:  
[manager@chalkevalleyplayschool.co.uk](mailto:manager@chalkevalleyplayschool.co.uk)

Call Us!  
**01722 781072**

## GRAYS STONE CARVING STUDIO



### BESPOKE MEMORIALS & INSCRIPTIONS

**Creating memorials of celebration  
and commemoration**

Individually designed, hand drawn and carved,  
using traditional hand tools and techniques.  
Made in collaboration with you.

Unit 2, Knowle Farm, Bowerchalke, Salisbury SP5 5BP  
[www.grays-stone-carving.co.uk](http://www.grays-stone-carving.co.uk)  
Henry M: 07766 464048 Tam M: 07919 258708

## Kevin Knight Clock & Watch Repairs

Free estimates given

Over 30 years experience

**Tel 01722 331969**

**Mob 07900 928451**

**Email:**

[kevindavidknight@gmail.com](mailto:kevindavidknight@gmail.com)

Comfortable and cosy self-contained accommodation.

### Little Bridge Studio

Bishopstone

Sleeps 3 plus cot.

Large open planned living space with wood burning stove.

Shower room and separate bathroom.

Contact: Alice Lyons – 07811455756

### **Charlotte Steel (Dip. Couns. MBACP)**

#### **Qualified Counsellor and Complementary Therapist**

The Chapel, Church Street, Bowerchalke, SP5 5AY

07811 944328, [cjsteel92@gmail.com](mailto:cjsteel92@gmail.com), [www.charlottesteel.org](http://www.charlottesteel.org)

**Counselling: £50** please see [www.bacp.co.uk](http://www.bacp.co.uk) for more info.

**Hot Stone Massage:** Full Body (90 minutes) £65, Back (1 hour) £50

**Massage:** Full Body (90 mins) £60, Back (1 hour) £45

**Reflexology:** Initial Consultation £38, Further Treatments £35

*Peaceful therapy room with plenty of parking*

**Gift Vouchers Available**



## Is it time to rethink your garden?

- Professionally designed gardens
- Full or partial redesigns
- Planting design
- Garden advice and consultancy
- Increase your property's value



Eleanor Osborne  
GARDEN DESIGN

eleanorobornegardendesign.com  
[egardendesign@gmail.com](mailto:egardendesign@gmail.com) 07732 003557  
Chalke Valley, Wiltshire

## Request from the Editorial Team:

*If you use any of the services advertised here in STaB please do let them know that you found them/their details here in the magazine.*

*This helps them to know that their advertising is working, and helps us to continue to receive revenue from advertising fees.*

*Also, if you know of any local businesses that might be interested in advertising with us, please do pass on our details to them.*

*Our advertising editor, Rob, works hard to secure us new advertisers. STaB couldn't exist without the revenue brought in by adverts, and we hope that the magazine is an effective way for local businesses to advertise as we reach over 300 homes in the parish, plus being published on the Bishopstone village website.*

# VALENTINE SIGNS For SIGNWRITING & GILDING SALISBURY

~ Aaron Stephens ~

• SIGNWRITING • BRILLIANT CUT GLASS • GILDING •

• 07708 820 841 • [aaron@valentinesigns.co.uk](mailto:aaron@valentinesigns.co.uk) •

Follow me on Instagram @aaronvalentinestephens

• VALENTINESIGNS.CO.UK •

## Tim Saunders Plumbing & Tiling Services

Complete Kitchens, Bathrooms & Wet rooms  
Tanks, Cylinders, Pumps, Valves & Radiators  
Taps, Basins, & Toilets  
Unvented hot water system installation, repair  
& servicing (G3 certificated)  
Stuart Turner approved installer  
Disabled/assisted living zero vat  
installations/conversions  
Wall & floor tiling  
Free advice and estimates  
Emergency repairs. No call out fees  
Fully insured

# 07772 610190

Email: [timsaundersps@gmail.com](mailto:timsaundersps@gmail.com)



**Felix Campbell Tree & Grounds Maintenance**

TREE SERVICES STRIMMING  
HEDGE CUTTING BRUSH CLEARANCE  
CHIPPING LOGS

**07472 402500**

**felixcampbell124@gmail.com**

NAOMI OOSTHUIZEN

**LETTING CLUTTER GO**

Professional Declutterer and Organiser

Services Included:  
Declutter & Organise the Home  
Sorting Paperwork  
Finding the Garden & Outbuildings

Are things growing out of control?  
Would you like to feel happier in your own home?  
If you are feeling overwhelmed at home from your belongings, whether from a normal busy life, a family crisis like a loss of someone close or a relationship separation to moving house, I can help you find your way through it.

[www.lettingcluttergo.co.uk](http://www.lettingcluttergo.co.uk)  
07900795158  
[naomi@lettingcluttergo.co.uk](mailto:naomi@lettingcluttergo.co.uk)

Fully insured, DBS checked, and member of APDO ([www.apdo.co.uk](http://www.apdo.co.uk))




**WILTSHIRE PEST SERVICES**

- Inspect - Prevent - Protect

For all your pest issues, Local, fully insured, fully qualified BPCA Member  
Wasps, Rats, Mice, Cluster fly, Clothes Moth, Fleas, Squirrels, Bed bugs  
Call now- **07711 259749** Email- **info@wiltshirepestservices.co.uk**



**Ben Ridgers-steer**  
**Oil Boiler Servicing**  
**and Repairs**



**07534 262633**  
**Ben\_r\_s@hotmail.com**



## LITTLE BANKSIDE

[www.littlebankside.co.uk](http://www.littlebankside.co.uk)

Do you need extra space for visiting family & friends?  
Self contained studio holiday let for 2 in Bishopstone.

Contact:  
Hilary King  
[littlebankside@gmail.com](mailto:littlebankside@gmail.com)  
01722 780017

### PODDINGTON COTTAGE

A newly refurbished one-bedroom detached annex in Bishopstone available for short Holiday Let. Well behaved dogs are welcome - maximum of 2 dogs. Fully fitted kitchen, parking for 2 cars, lounge with smart tv, Wi-Fi, dining area and shower room.

For more information, please contact Sandra on 07939626155 or email:

[poddingtoncottage@btinternet.com](mailto:poddingtoncottage@btinternet.com)

A warm welcome awaits.



# Your local property expert

[w-w.co.uk](http://w-w.co.uk)





## METAL ARTWORK

# BLACKSMITHS & GENERAL ENGINEERS

01722 781212

[www.metal-artwork.co.uk](http://www.metal-artwork.co.uk)



## Pregnant?

Looking for evidenced-based childbirth education?

Considering having an extra birth partner?

### A doula can...

- Stay with you throughout labour and birth to help you achieve your specific choices
- Offer 1:1 breastfeeding and general feeding support
- Provide help at home for those first few days and weeks after birth

Doula Cally Edwards offers emotional and physical support to help you truly enjoy your pregnancy, birth and early days with your new baby



[www.callyedwards.com](http://www.callyedwards.com)



@doulacally



## Empowering Your Health with Simple, Sustainable Nutrition

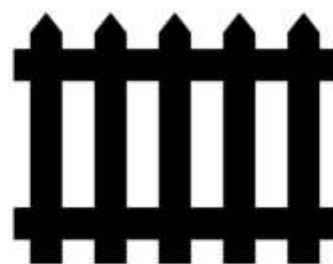
I provide personalised nutrition advice to support weight loss, boost energy, balance blood sugar, improve gut health and promote lasting well-being

T: +44 (0) 7435 520 772

E: [amber@ambercotton.co.uk](mailto:amber@ambercotton.co.uk)

Web: [www.ambercotton.co.uk](http://www.ambercotton.co.uk)

## Ebble Fencing



- Bespoke Fences and Gates
- Professional Service
- 20+ Years Experience
- Fully Insured
- Free Quotations

07789 707959

[www.ebblefencing.com](http://www.ebblefencing.com)

# evolve

TREE SERVICES

call Stuart Larter for a free quote

**07563 645043**  
**01747 871753**



Tree Specialist,  
Fully Qualified and Insured

[www.evolveetree.co.uk](http://www.evolveetree.co.uk)



## Boiler Servicing & Maintenance

- Breakdowns - Repairs - Oil - Gas  
- LPG -

Mark Benfield

01747 828689 or 07974 249287

[mark@mabheatingservices.co.uk](mailto:mark@mabheatingservices.co.uk)

## Jennie Gilbert – Pottery

Handmade Stoneware pots for the home  
Perfect presents for you or your friends

Beginners Pottery courses (2 day),  
tokens available

4 St. Martin's Workshops, Manor Farm,  
Fifield Bavant,

Broad Chalke, Salisbury SP5 5HT

01722 780402

[jennie.gilbert@yahoo.co.uk](mailto:jennie.gilbert@yahoo.co.uk)



[www.jenniegilbert.com](http://www.jenniegilbert.com)

## Jayne Lucas

Hairdressing



I cover all aspects of  
hairdressing for adults  
and children in a lovely  
relaxed salon setting  
near Coombe Bissett  
with easy *free* parking.

For enquiries & bookings please call:-

**07771 625161**

## 2024 Advertising rates – based on A5 page

Our magazine is a source of information for all households in the parish and is used by residents as a handy directory of local news, events and services. It is delivered free to over 300 households, and also viewable online at <https://www.bishopstone-salisbury.co.uk/parish-magazine-stab>. It is published in 10 x monthly editions with combined editions for Aug/Sep & Dec/Jan.

Prices below are per annum in bold. There is a significant discount for advertisers who choose to pay for all ten editions in advance.

<b>Full page (A5)</b>  13x19cm  <b>£120 per annum</b>	<b>Half page</b>  13x9.5cm  <b>£75 per annum</b>	<b>Quarter page</b> <b>Portrait</b> 6.5x9.5cm  <b>£40 per annum</b>	<b>Quarter page</b> <b>Landscape</b> 13x5cm  <b>£40 per annum</b>
---	--	---	--

One off/occasional advertisements will cost slightly more per issue as follows:

<i>Full Page: £15.00 per issue</i>	<i>Half Page: £9.00 per issue</i>	<i>Quarter Page: £5.00 per issue</i>
------------------------------------	-----------------------------------	--------------------------------------

### How to place your ad in STaB

1. Make a .pdf, .jpeg, or Word file of your ad, making sure it is the correct size for publication (see table of sizes and prices above) and that it will reproduce well in black and white. We cannot design or make advertisements for you.
2. E-mail the file to Rob Pendleton (stabads@outlook.com), stating which of the above sizes you would like.
3. The deadline for publication is the 20th of each month. Please send ad as early as possible as the e-mails will not be checked daily. If you do not send a new ad by this date, we will use the most up to date version we have.
4. When you have placed your order, you will receive an invoice with details of payment by cheque or bank transfer. Please pay within 14 days and make sure you include your reference number and business name. Donations are also always welcome.
5. The Editor reserves the right to edit all contributions.

### How to pay:

Cheques: Please write your <u>invoice number</u> on the back	Bank transfer: Please use <u>your name</u> & <u>invoice number</u> for reference
Payable to: Bishopstone Parochial Church Council Send to: The Treasurer, Ebble Cottage, Mill Lane, Bishopstone, SP5 4BG	Bank: Lloyds TSB Sort Code: 30-97-41 Account Number: 00665145 Account Name: PCC Bishopstone Church

Terms – payment within 14 days

Queries:

Rob Pendleton, STaB Advertising: Email: [stabads@outlook.com](mailto:stabads@outlook.com)



## BISHOPSTONE PARISH COUNCIL

Councillors	Telephone
Ali Thorne (Chairman)	07768 514133
Piers Edwards (Vice Chairman)	01722 780079
Norman Barter	01722 780471
Anita Smith	01722 781213
Michelle Tatner	07968 842525
Simon Williams	01722 780905
Nicky Rigg	07786 806914
Parish Clerk	
Mike Ash Lower Thatch Flamstone Street Bishopstone SP5 4BZ	01722 781044 bishopstoneclerk@btinternet.com
Further information is on the village website: <a href="http://www.bishopstone-salisbury.co.uk">www.bishopstone-salisbury.co.uk</a>	

## THE VILLAGE HALL COMMITTEE MEMBERS

Chairman - Norman Barter	780471
Treasurer - Francis Taylor	780316
Secretary - Sue Grantham	07873 596310
Entertainments - Sue Taylor	780316
Event bookings - Caroline Ash	781044
Hall bookings - Margaret Barter	780471
Hall maintenance - Nigel Peasley	07761 463737
Member - Andy Stocker	780956
Member - Kathy Hales	07940 659644

*The Village Hall is an important resource and offers a venue for a wide variety of events for the benefit of all. The Hall is supported by a large group of dedicated local people in addition to the Committee. We hope you will support events whenever you can and if you would like to join the wider group of Friends of the Village Hall then please contact any member of the committee.*

FLOOD WARDENS	
West - Nigel Peasley	07761 463737
East - Michael Pratt	07798 607742
Emergency Planning - Piers Edwards	07920 475009

## Letters to the Editor

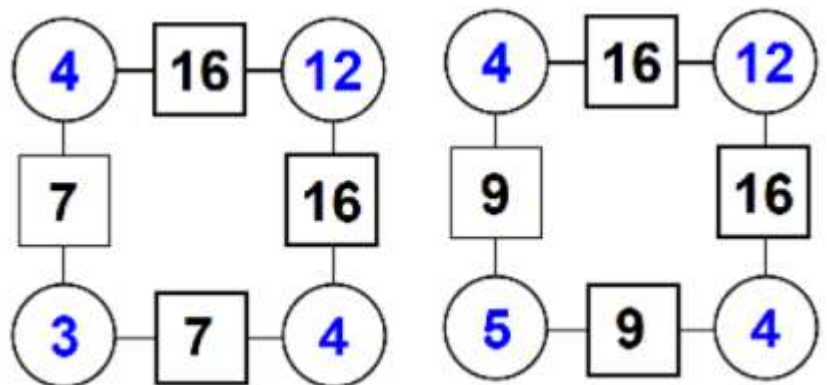
*Letters to STaB are very welcome, but the views expressed may not be those of the editorial team or the Parish Church Council.*



No letters to STaB this month, so here's a relevant liturgical cartoon instead!

Ascension Day this year is on Thursday, May 29th. As you will see over the page, it is being celebrated in the valley with a communion service at noon in the beautiful church at Fifield Bavant.

### Arithmagon Solutions



### STaB Selling Spot

**STaB Selling Spot** posts are free of charge for those who live in the Parish. Let us know if you have anything to sell!

### Bishopstone Village Website

[www.bishopstone-salisbury.co.uk](http://www.bishopstone-salisbury.co.uk)

The village website carries a wealth of information about Bishopstone. There are pages devoted to the church, the Parish Council, what's on at the Village Hall, meetings, clubs, local organisations and village walks. There are even digital copies of this magazine.

If you want to have any information included on the website please contact either

Mike Ash ([bishopstoneclerk@btinternet.com](mailto:bishopstoneclerk@btinternet.com))

Or Roger Stockton ([rogerstockton@icloud.com](mailto:rogerstockton@icloud.com))



## Services in Chalke Valley Benefice – May 2025

BCP = Book of Common Prayer (Traditional Language), CW = Common Worship (Contemporary Language)



<b>4 May 3<sup>rd</sup> Sunday of Easter</b>	9.30am 9.30am 9.30am 11.00am 11.00am 11.00am	Family Communion (CW) Parish Communion (CW) Holy Communion (BCP) Morning Prayer (BCP) Parish Communion (CW) Family Service	Broad Chalke Britford Berwick St John Ebbesbourne Wake Coombe Bissett Odstock	Maggie Metcalfe Jenny Taylor Alison Waterhouse Biddy Trahair Jenny Taylor Adrian Taylor
<b>11 May 4<sup>th</sup> Sunday of Easter</b>	10.30am	Benefice Communion to mark the retirement of the Revd Canon Jenny Taylor	Bishopstone	Jenny Taylor Archdeacon of Sarum
<b>18 May 5<sup>th</sup> Sunday of Easter</b>	9.30am 9.30am 9.30am 11.00am 11.00am 11.00am	Holy Communion (BCP) Parish Communion (CW) Parish Communion (CW) Family Communion (CW) Parish Communion (CW) Parish Communion (CW)	Bowerchalke Bishopstone Odstock Ebbesbourne Wake Coombe Bissett Berwick St John	Kate Woolven Tony Monds Maggie Metcalfe Kate Woolven Maggie Metcalfe Tony Monds
<b>25 May 6<sup>th</sup> Sunday of Easter</b>	9.30am 9.30am 11.00am 11.00am 11.00am 11.00am 6.00pm	Parish Communion (CW) Parish Communion (CW) Family Service Parish Communion (CW) Holy Communion (BCP) Morning Prayer (BCP) Evening Prayer (BCP)	Charlton All Saints Broad Chalke Nunton Bishopstone Alvediston Berwick St John Homington	Ruth H-S Kate Woolven Adrian Taylor Ruth H-S Kate Woolven Lay Led Rhoddy Voremberg
<b>29 May ASCENSION DAY</b>	12 Noon	Benefice Communion (CW)	Fifield Bavant	Ruth H-S
<b>1 June Sunday after Ascension</b>	9.30am 9.30am 11.00am 11.00am 11.00am 11.00am 11.00am	Family Communion (CW) Parish Communion (CW) Holy Communion (BCP) Morning Prayer (BCP) Parish Communion (CW) Family Service Morning Service	Broad Chalke Britford Berwick St John Ebbesbourne Wake Coombe Bissett Odstock Bishopstone	Alison Waterhouse Ruth H-S Alison Waterhouse Biddy Trahair Ruth H-S Adrian Taylor Sally Leaver

### Ministry Team:

Team Rector ~ The Revd Dr Ruth Howlett-Shipley: 01722 697022

Team Vicars ~ The Revd Canon Jenny Taylor: 01722 503081, The Revd Alison Waterhouse: 07904 034221

Associate Priests ~ The Revd Maggie Metcalfe: 01722 325825, The Revd Kate Woolven: 07754 582395

Team Administrator ~ Mrs Emily Broomhead: 07890 262376

### Assisting Clergy:

The Revd Canon Anthony Hawley: 01794 390607, The Revd Canon Tony Monds: 07808 614597

Lay Worship Leaders: Angela Bridges: 01747 828383, Yvonne & Kevin Follett: 01747 828785, Caroline Lamb: 01722 780789,  
Sally Leaver: 01722 780447, Don Morgan: 01722 718557, Adrian Taylor: 01722 325862, Janet Roe: 01725 519242,  
Biddy Trahair: 01722 780666, Rhoddy Voremberg: 07785 304142, James Wardroper: 01722 718152

If there are any problems with the delivery of STaB please contact Sue Porter on [porter1totalserve@gmail.com](mailto:porter1totalserve@gmail.com) or 01722 780459.